

# Anti-PKC mu/PKD Rabbit antibody



Catalog Number: 167092

## Product name

Anti-PKC mu/PKD Rabbit antibody

## Specificity

Human, Mouse, Rat

## Antibody description

PKC mu/PKD Rabbit polyclonal antibody

## Preparation

Antigen: A synthetic peptide of human PKC mu

## Formulation

Supplied in 50nM Tris-Glycine(pH 7.4), 0.15M NaCl, 40%Glycerol, 0.01% sodium azide and 0.05% BSA.

## Storage

Store at -20°C. Stable for 12 months from date of receipt.

## Clonality

Polyclonal

## Ig Type

Rabbit IgG

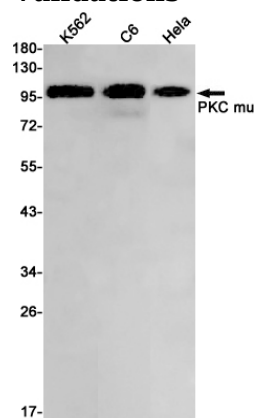
## Applications

WB

## Dilutions

WB: 1/1000

## Validations



Western blot detection of PKC mu in K562,C6,HeLa cell lysates using PKC mu Rabbit pAb(1:1000 diluted).Predicted band size:102kDa.Observed band size:102kDa.