

# Anti-phospho-Smad2/3 (Thr8) Rabbit antibody



Catalog Number: 167091

## Product name

Anti-phospho-Smad2/3 (Thr8) Rabbit antibody

## Specificity

Human, Mouse, Rat

## Antibody description

phospho-Smad2/3 (Thr8) Rabbit polyclonal antibody

## Preparation

Antigen: The antiserum was produced against synthesized peptide derived from human Smad2/3 around the phosphorylation site of Thr8. AA range:1-50

## Formulation

Liquid in PBS containing 50% glycerol, 0.5% BSA and 0.02% sodium azide.

## Storage

Store at 4°C short term. Store at -20°C long term. Avoid freeze / thaw cycle.

## Clonality

Polyclonal

## Ig Type

Unknown

## Applications

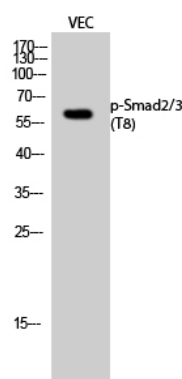
WB, ELISA

## Dilutions

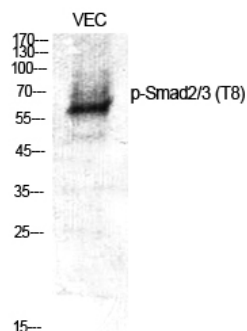
WB: 1/500 - 1/2000

ELISA: 1/10000

## Validations



Western Blot analysis of VEC cells using Phospho-Smad2/3 (T8) Polyclonal Antibody



Western Blot analysis of various cells using Phospho-Smad2/3 (T8) Polyclonal Antibody