

# Anti-Phospho-S6K1 (Thr421 + Ser424) Rabbit antibody



Catalog Number: 167090

## Product name

Polyclonal

Anti-Phospho-S6K1 (Thr421 + Ser424) Rabbit antibody

## Ig Type

Rabbit IgG

## Specificity

Human, Rat

## Applications

WB, IP

## Antibody description

Phospho-S6K1 (Thr421 + Ser424) Rabbit polyclonal antibody

## Dilutions

WB: 1/500-1/2000

## Preparation

IP: 1/30

Antigen: A synthesized peptide derived from human Phospho-S6K1 (T421 + S424)

## Validations

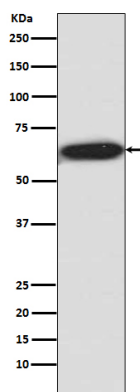
## Formulation

Rabbit IgG in phosphate buffered saline , pH 7.4, 150mM NaCl, 0.02% sodium azide and 50% glycerol.

## Storage

Store at 4°C short term. Store at -20°C long term. Avoid freeze / thaw cycle.

## Clonality



Western blot analysis of SK61 phosphorylation expression in HEK293 cell lysate.