

# Anti-Phospho-mTOR (Ser2448) Rabbit antibody



Catalog Number: 167078

## Product name

Anti-Phospho-mTOR (Ser2448) Rabbit antibody

## Dilutions

WB: 1/1000

## Specificity

Human, Mouse

IHC: 1/20

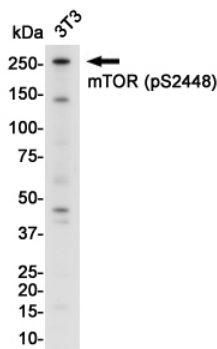
## Antibody description

Phospho-mTOR (Ser2448) Rabbit polyclonal antibody

## Validations

### Preparation

Antigen: A synthetic phosphopeptide corresponding to residues surrounding Ser2448 of human mTOR



### Formulation

Supplied in 50nM Tris-Glycine(pH 7.4), 0.15M NaCl, 40%Glycerol, 0.01% sodium azide and 0.05% BSA.

Western blot detection of mTOR (Phospho-Ser2448) in 3t3 cell lysates using mTOR (Phospho-Ser2448) Rabbit pAb(1:1000 diluted).Predicted band size:289KDa.Observed band size:289KDa.

### Storage

Store at -20°C. Stable for 12 months from date of receipt.

### Clonality

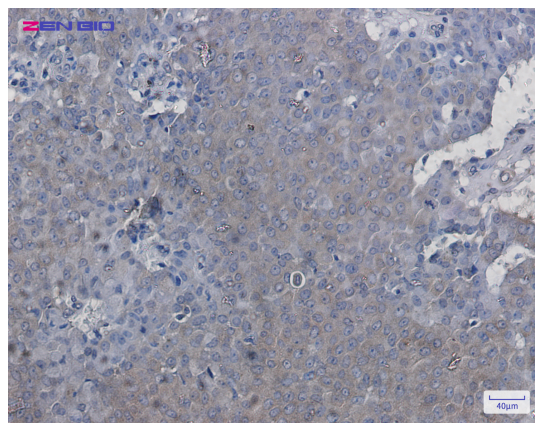
Polyclonal

### Ig Type

Rabbit IgG

### Applications

WB, IHC-P



Immunohistochemistry of mTOR (Phospho-Ser2448) in paraffin-embedded Human breast cancer tissue using mTOR (Phospho-Ser2448) Rabbit pAb at dilution 1/50