

Anti-RbAp48 Rabbit antibody



Catalog Number: 167075

Product name

Anti-RbAp48 Rabbit antibody

WB: 1/1000-1/5000

IHC: 1/50-1/200

Specificity

Human, Mouse, Rat

ICC/IF: 1/50-1/200

IP: 1/50

FC: 1/50

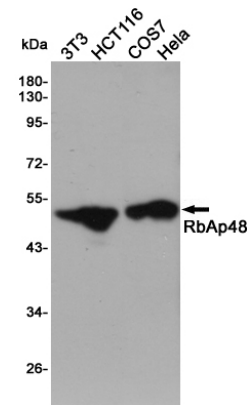
Antibody description

RbAp48 Rabbit polyclonal antibody

Validations

Preparation

Antigen: A synthesized peptide derived from human RbAp48



Formulation

Rabbit IgG in phosphate buffered saline , pH 7.4, 150mM NaCl, 0.02% sodium azide and 50% glycerol.

Western blot analysis of extracts from 3T3, HCT116, COS7 and HeLa cells using RbAp48 Rabbit pAb at 1:1000 dilution. Predicted band size: 48kDa. Observed band size: 48kDa.

Storage

Store at 4°C short term. Store at -20°C long term. Avoid freeze / thaw cycle.

Clonality

Polyclonal

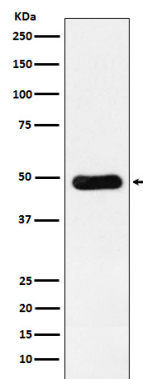
Ig Type

Rabbit IgG

Applications

WB, IHC-P, ICC/IF, IP, FC

Dilutions



Western blot analysis of RbAp48 expression in Jurkat cell lysate.