

# Anti-TRIM56 Rabbit antibody



Catalog Number: 167073

## Product name

Anti-TRIM56 Rabbit antibody

## Specificity

Human

## Antibody description

TRIM56 Rabbit polyclonal antibody

## Preparation

Antigen: A synthetic peptide of human TRIM56

## Formulation

Supplied in 50nM Tris-Glycine(pH 7.4), 0.15M NaCl, 40%Glycerol, 0.01% sodium azide and 0.05% BSA.

## Storage

Store at -20°C. Stable for 12 months from date of receipt.

## Clonality

Polyclonal

## Ig Type

Rabbit IgG

## Applications

WB, IHC-P, ICC/IF, FC

## Dilutions

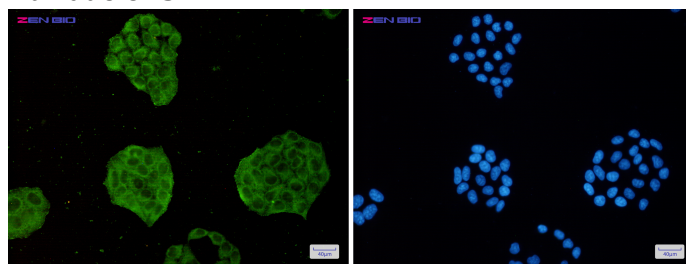
WB: 1/2000-1/10000

IHC: 1/20

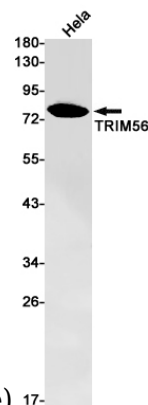
ICC/IF: 1/50

FC: 1/20-1/100

## Validations



Immunocytochemistry of TRIM56(green) in HeLa cells using TRIM56 Rabbit pAb at dilution 1/50, and DAPI(blue)



and DAPI(blue)

Western blot detection of TRIM56 in HeLa cell lysates using TRIM56 Rabbit pAb(1:1000 diluted). Predicted band size:82kDa. Observed band size:82kDa.