

Anti-Integrin beta 1 Rabbit antibody



Catalog Number: 167059

Product name

Rabbit IgG

Anti-Integrin beta 1 Rabbit antibody

Applications

Specificity

WB, IHC-P, ICC/IF, FC

Human

Dilutions

Antibody description

WB: 1/1000

Integrin beta 1 Rabbit polyclonal antibody

IHC: 1/50

Preparation

ICC/IF: 1/50

Antigen: A synthetic peptide of human Integrin beta 1

FC: 1/50

Validations

Formulation

Supplied in 50nM Tris-Glycine(pH 7.4), 0.15M NaCl, 40%Glycerol, 0.01% sodium azide and 0.05% BSA.

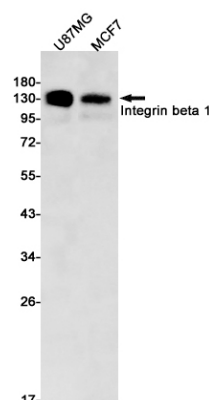
Storage

Store at -20°C. Stable for 12 months from date of receipt.

Clonality

Polyclonal

Ig Type



Western blot detection of Integrin beta 1 in U87MG, MCF7 cell lysates using Integrin beta 1 Rabbit pAb (1:1000 diluted). Predicted band size: 88kDa. Observed band size: 120-160kDa.