

Anti-Caveolin-1 Rabbit antibody



Catalog Number: 167041

Product name

Anti-Caveolin-1 Rabbit antibody

WB: 1/1000-1/5000

IHC: 1/20

Specificity

Human

ICC/IF: 1/20

Antibody description

Caveolin-1 Rabbit polyclonal antibody

Preparation

Antigen: A synthetic peptide of human Caveolin-1

Formulation

Supplied in 50nM Tris-Glycine(pH 7.4), 0.15M NaCl, 40%Glycerol, 0.01% sodium azide and 0.05% BSA.

Storage

Store at -20°C. Stable for 12 months from date of receipt.

Clonality

Polyclonal

Ig Type

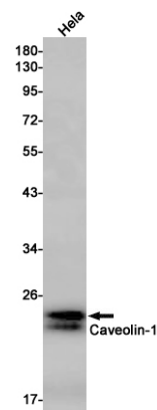
Rabbit IgG

Applications

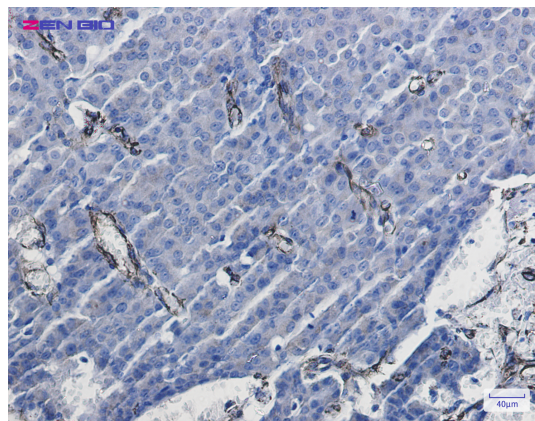
WB, IHC-P, ICC/IF

Dilutions

Validations



Western blot detection of Caveolin-1 in HeLa cell lysates using Caveolin-1 Rabbit pAb(1:1000 diluted). Predicted band size:20kDa. Observed band size:20kDa.



Immunohistochemistry of Caveolin-1 in paraffin-embedded Human breast cancer tissue using Caveolin-1 Rabbit pAb at dilution 1/20