

Anti-PRMT3 Rabbit antibody



Catalog Number: 167039

Product name

Anti-PRMT3 Rabbit antibody

WB: 1/2000-1/10000

IHC: 1/20

Specificity

Human

ICC/IF: 1/20

IP: 1/20

Antibody description

PRMT3 Rabbit polyclonal antibody

Preparation

Antigen: A synthetic peptide of human PRMT3

Formulation

Supplied in 50nM Tris-Glycine(pH 7.4), 0.15M NaCl, 40%Glycerol, 0.01% sodium azide and 0.05% BSA.

Storage

Store at -20°C. Stable for 12 months from date of receipt.

Clonality

Polyclonal

Ig Type

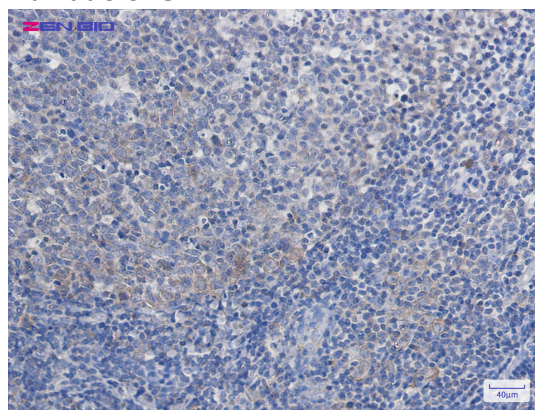
Rabbit IgG

Applications

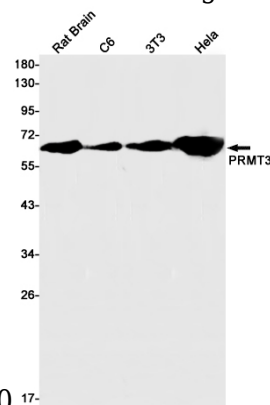
WB, IHC-P, ICC/IF, IP

Dilutions

Validations



Immunohistochemistry of PRMT3 in paraffin-embedded Human tonsil using PRMT3 Rabbit pAb



at dilution 1/20

Western blot detection of PRMT3 in Rat Brain, C6, 3T3, HeLa cell lysates using PRMT3 Rabbit pAb(1:1000 diluted). Predicted band size: 60kDa. Observed band size: 60kDa.