

# Anti-MMP14 Rabbit antibody



Catalog Number: 167028

## Product name

Anti-MMP14 Rabbit antibody

WB: 1/1000-1/2000

IHC: 1/50-1/200

## Specificity

Human, Mouse, Rat

ICC/IF: 1/50-1/200

IP: 1/50

FC: 1/50

## Antibody description

MMP14 Rabbit polyclonal antibody

## Validations

## Preparation

Antigen: A synthesized peptide derived from human MMP14

## Formulation

Rabbit IgG in phosphate buffered saline , pH 7.4, 150mM NaCl, 0.02% sodium azide and 50% glycerol.

## Storage

Store at 4°C short term. Store at -20°C long term. Avoid freeze / thaw cycle.

## Clonality

Polyclonal

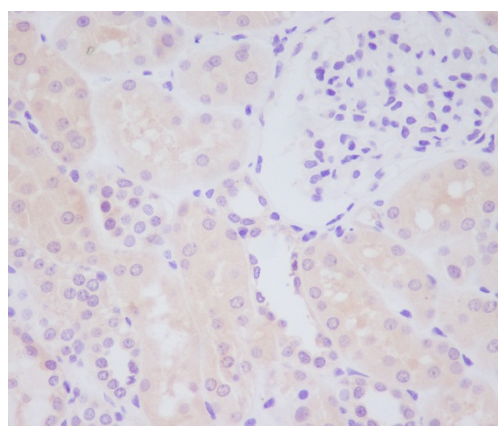
## Ig Type

Rabbit IgG

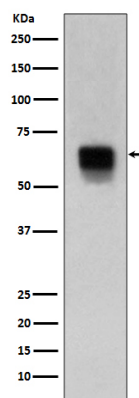
## Applications

WB, IHC-P, ICC/IF, IP, FC

## Dilutions



Immunohistochemical analysis of paraffin-embedded human kidney, using MMP14 Antibody



Western blot analysis of MMP14 expression in human spleen lysate.