

Anti-Acetyl-Histone H4 (Lys16) Rabbit antibody



Catalog Number: 167027

Product name

Anti-Acetyl-Histone H4 (Lys16) Rabbit antibody

ICC/IF: 1/50-1/200

FC: 1/50

Validations

Specificity

Human, Mouse, Rat

Antibody description

Acetyl-Histone H4 (Lys16) Rabbit polyclonal antibody

Preparation

Antigen: A synthesized peptide derived from human Histone H4 (acetyl K16)

Formulation

Rabbit IgG in phosphate buffered saline , pH 7.4, 150mM NaCl, 0.02% sodium azide and 50% glycerol.

Storage

Store at 4°C short term. Store at -20°C long term. Avoid freeze / thaw cycle.

Clonality

Polyclonal

Ig Type

Rabbit IgG

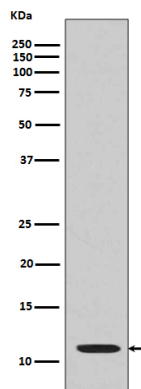
Applications

WB, IHC-P, ICC/IF, FC

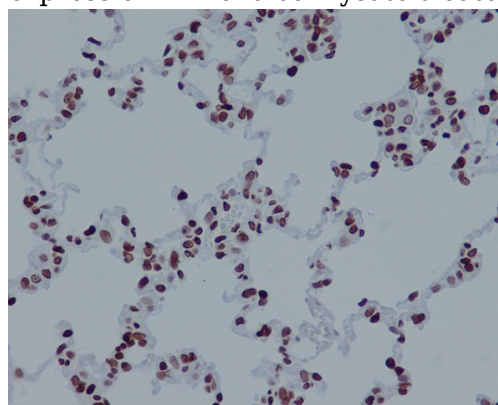
Dilutions

WB: 1/500-1/2000

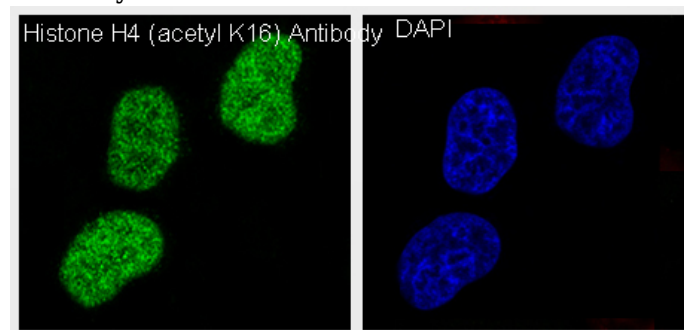
IHC: 1/50-1/200



Western blot analysis of Acetyl-Histone H4 (K16) expression in HeLa cell lysate treated with TSA.



Immunohistochemical analysis of paraffin-embedded rat lung, using Histone H4 (acetyl K16) Antibody.



Immunofluorescent analysis of HeLa cells treated with TSA, using Histone H4 (acetyl K16) Antibody.