

# Anti-Phospho-Caspase 9 (Ser196) Rabbit antibody



Catalog Number: 167023

## Product name

WB, IHC-P

Anti-Phospho-Caspase 9 (Ser196) Rabbit antibody

## Dilutions

## Specificity

WB::1:1000IHC::1:50~100

Human

## Validations

## Antibody description

Phospho-Caspase 9 (Ser196) Rabbit polyclonal antibody

## Preparation

Antigen: This Phospho-Caspase 9-S196 antibody is generated from rabbits immunized with a KLH conjugated synthetic phosphopeptide corresponding to amino acid residues surrounding S196 of human caspase 9.

## Formulation

Purified polyclonal antibody supplied in PBS with 0.09% (W/V) sodium azide. This antibody is first purified by protein G affinity chromatography. Then, the antibody fraction is peptide affinity purified in a 2-step procedure with control and phosphorylate

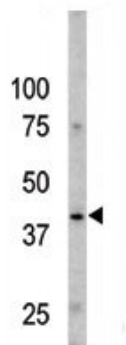
## Clonality

Polyclonal

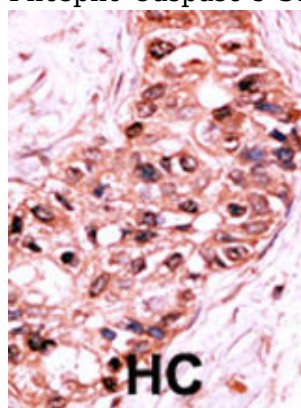
## Ig Type

Rabbit IgG

## Applications



The anti-Phospho-Caspase 9-S196 Pab (Cat. #167023) is used in Western blot to detect Phospho-Caspase 9-S196 in Y79 cell line lysates.



Formalin-fixed and paraffin-embedded human cancer tissue reacted with the primary antibody, which was peroxidase-conjugated to the secondary antibody, followed by AEC staining. This data demonstrates the use of this antibody for immunohistochemistry; clin