

Anti-IGFBP7 Rabbit antibody



Catalog Number: 167011

Product name

Anti-IGFBP7 Rabbit antibody

WB: 1/1000-1/2000

IHC: 1/20-1/50

Specificity

Human, Mouse, Rat

ICC/IF: 1/50-1/100

FC: 1/20-1/100

Antibody description

IGFBP7 Rabbit polyclonal antibody

Preparation

Antigen: A synthetic peptide of human IGFBP7

Formulation

Supplied in 50nM Tris-Glycine(pH 7.4), 0.15M NaCl, 40%Glycerol, 0.01% sodium azide and 0.05% BSA.

Storage

Store at -20°C. Stable for 12 months from date of receipt.

Clonality

Polyclonal

Ig Type

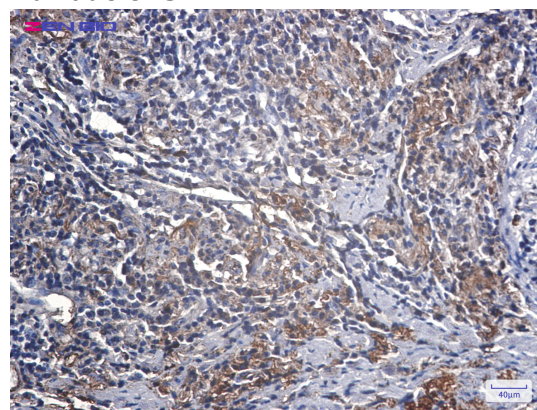
Rabbit IgG

Applications

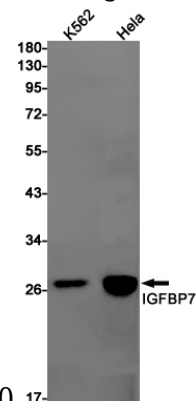
WB, IHC-P, ICC/IF, FC

Dilutions

Validations



Immunohistochemistry of IGFBP7 in paraffin-embedded Human lung cancer tissue using



IGFBP7 Rabbit pAb at dilution 1/20

Western blot detection of IGFBP7 in K562, HeLa cell lysates using IGFBP7 Rabbit pAb(1:1000 diluted). Predicted band size: 29kDa. Observed band size: 29kDa.