

# Anti-S100 beta Rabbit antibody



Catalog Number: 167008

## Product name

Anti-S100 beta Rabbit antibody

## Specificity

Human, Mouse, Rat

## Antibody description

S100 beta Rabbit polyclonal antibody

## Preparation

Antigen: A synthetic peptide of human S100 beta

## Formulation

Supplied in 50nM Tris-Glycine(pH 7.4), 0.15M NaCl, 40%Glycerol, 0.01% sodium azide and 0.05% BSA.

## Storage

Store at -20°C. Stable for 12 months from date of receipt.

## Clonality

Polyclonal

## Ig Type

Rabbit IgG

## Applications

WB, IHC-P, ICC/IF, IP

## Dilutions

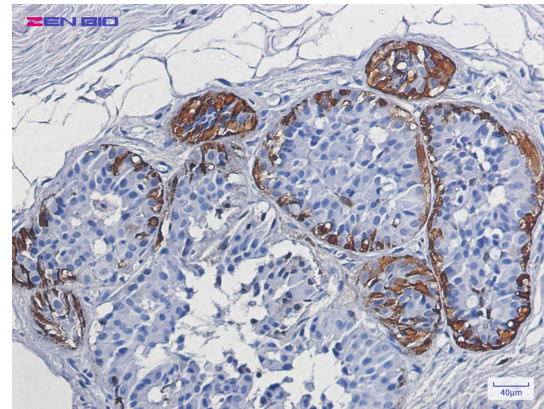
WB: 1/1000

IHC: 1/50-1/200

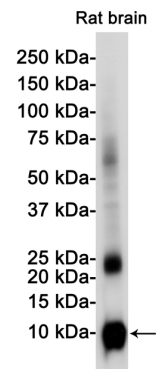
ICC/IF: 1/20

IP: 1/20

## Validations

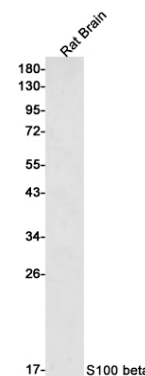


Immunohistochemistry of S100 beta in paraffin-embedded Human breast cancer tissue using S100



beta Rabbit pAb at dilution 1/50

Western blot detection of S100 beta in Rat Brain lysates using S100 beta Rabbit pAb(1:1000 diluted).Predicted band size:11KDa.Observed



band size:11KDa.

Western blot detection of S100 beta in Rat Brain lysates using S100 beta Rabbit pAb(1:500 diluted).Predicted band size:11kDa.Observed band size:11kDa.