

Anti-eIF5A Rabbit antibody



Catalog Number: 167006

Product name

Anti-eIF5A Rabbit antibody

IP: 1/50

FC: 1/50

Specificity

Human, Mouse, Rat

Antibody description

eIF5A Rabbit polyclonal antibody

Preparation

Antigen: A synthesized peptide derived from human eIF5A

Formulation

Rabbit IgG in phosphate buffered saline , pH 7.4, 150mM NaCl, 0.02% sodium azide and 50% glycerol.

Storage

Store at 4°C short term. Store at -20°C long term. Avoid freeze / thaw cycle.

Clonality

Polyclonal

Ig Type

Rabbit IgG

Applications

WB, IHC-P, ICC/IF, IP, FC

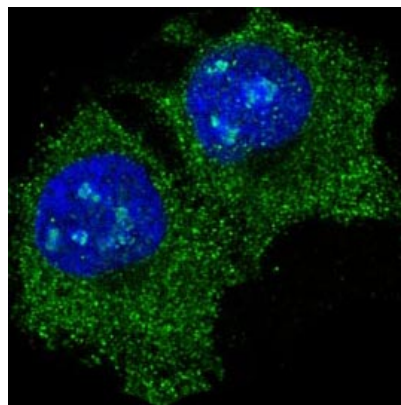
Dilutions

WB: 1/5000-1/10000

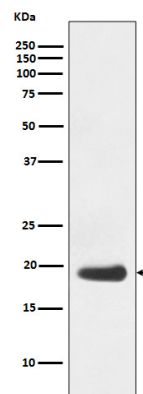
IHC: 1/50-1/200

ICC/IF: 1/100-1/500

Validations

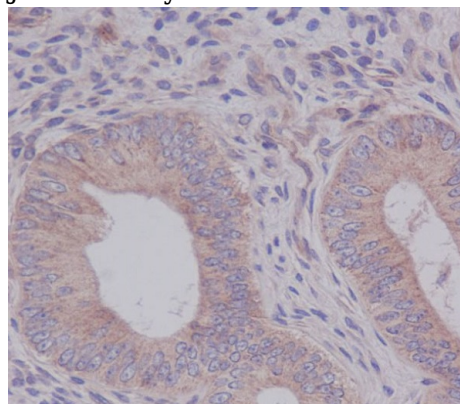


Immunofluorescent analysis of HeLa cells, using



eIF5A Antibody.

Western blot analysis of eIF5A expression in Jurkat cell lysate.



Immunohistochemical analysis of paraffin-embedded human uterus cancer, using eIF5A Antibody.