

# Anti-Junctional Adhesion Molecule 1/JAM-A Rabbit antibody



Catalog Number: 167005

## Product name

WB, IHC-P

Anti-Junctional Adhesion Molecule 1/JAM-A Rabbit antibody

## Dilutions

WB: 1/500-1/2000

## Specificity

Human, Mouse, Rat

IHC: 1/50-1/200

## Antibody description

Junctional Adhesion Molecule 1/JAM-A Rabbit polyclonal antibody

## Preparation

Antigen: A synthesized peptide derived from human JAM1

## Formulation

Rabbit IgG in phosphate buffered saline , pH 7.4, 150mM NaCl, 0.02% sodium azide and 50% glycerol.

## Storage

Store at 4°C short term. Store at -20°C long term. Avoid freeze / thaw cycle.

## Clonality

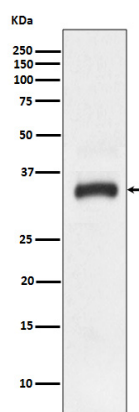
Polyclonal

## Ig Type

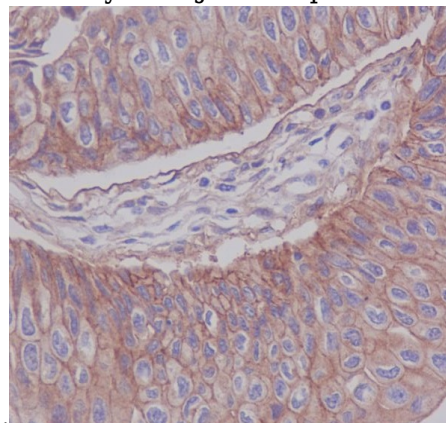
Rabbit IgG

## Applications

## Validations



Western blot analysis of JAM1 expression in HeLa



cell lysate.

Immunohistochemical analysis of paraffin-embedded human bladder cancer, using JAM1 Antibody.