

Anti-Bax Rabbit antibody



Catalog Number: 167004

Product name

Anti-Bax Rabbit antibody

Specificity

Human, Mouse, Rat, Hamster

Antibody description

Bax Rabbit polyclonal antibody

Preparation

Antigen: A synthesized peptide derived from human Bax

Formulation

Rabbit IgG in phosphate buffered saline , pH 7.4, 150mM NaCl, 0.02% sodium azide and 50% glycerol.

Storage

Store at 4°C short term. Store at -20°C long term. Avoid freeze / thaw cycle.

Clonality

Polyclonal

Ig Type

Rabbit IgG

Applications

WB, IHC-P, IP, FC

Dilutions

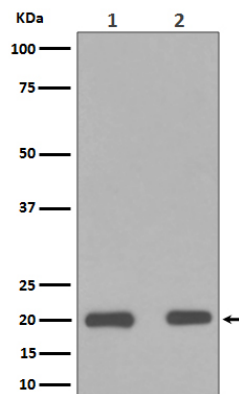
WB: 1/1000-1/2000

IHC: 1/50-1/200

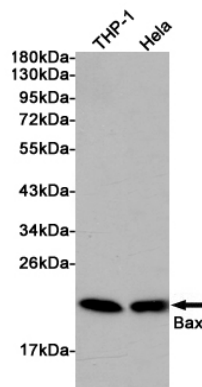
IP: 1/50

FC: 1/50

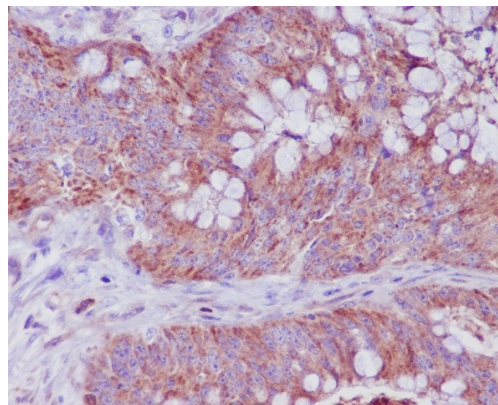
Validations



Western blot analysis of Bax in (1) HeLa cell lysate;(2) RAW264.7 Whole Cell Lysate.



Western blot analysis of extracts from THP-1 and HeLa cells using Bax Rabbit pAb at 1:1000 dilution. Predicted band size: 21kDa. Observed band size: 21kDa.



Immunohistochemical analysis of paraffin-embedded human adenocarcinoma of colon, using Bax Antibody.