

Anti-YAP1 Rabbit antibody



Catalog Number: 166996

Product name

Anti-YAP1 Rabbit antibody

Specificity

Human, Mouse

Antibody description

YAP1 Rabbit polyclonal antibody

Preparation

Antigen: A synthetic peptide of human YAP1

Formulation

Supplied in 50nM Tris-Glycine(pH 7.4), 0.15M NaCl, 40%Glycerol, 0.01% sodium azide and 0.05% BSA.

Storage

Store at -20°C. Stable for 12 months from date of receipt.

Clonality

Polyclonal

Ig Type

Rabbit IgG

Applications

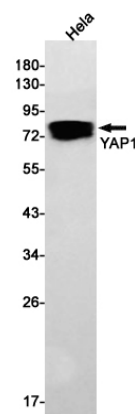
WB, ICC/IF

Dilutions

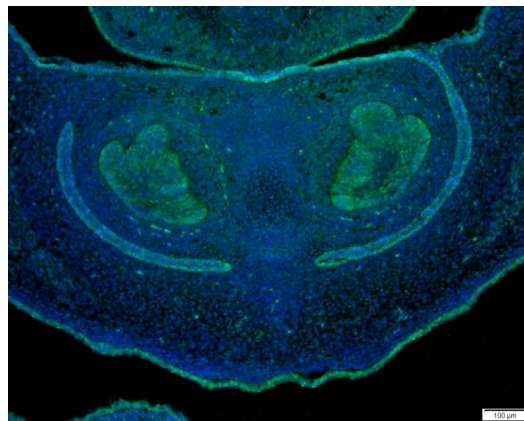
WB: 1/1000

ICC/IF: 1/100

Validations



Western blot detection of YAP1 in HeLa cell lysates using YAP1 Rabbit pAb(1:1000 diluted). Predicted band size:55kDa. Observed band size:70-75kDa.



Immunofluorescent analysis of mouse embryo tissue, using YAP1 Antibody .