

Anti-SQSTM1/p62 Rabbit antibody



Catalog Number: 166990

Product name

Anti-SQSTM1/p62 Rabbit antibody

Specificity

Human, Mouse, Rat

Antibody description

SQSTM1/p62 Rabbit polyclonal antibody

Preparation

Antigen: A synthesized peptide derived from human p62/SQSTM1

Formulation

Rabbit IgG in phosphate buffered saline , pH 7.4, 150mM NaCl, 0.02% sodium azide and 50% glycerol.

Storage

Store at 4°C short term. Store at -20°C long term. Avoid freeze / thaw cycle.

Clonality

Polyclonal

Ig Type

Rabbit IgG

Applications

WB, ICC/IF, FC

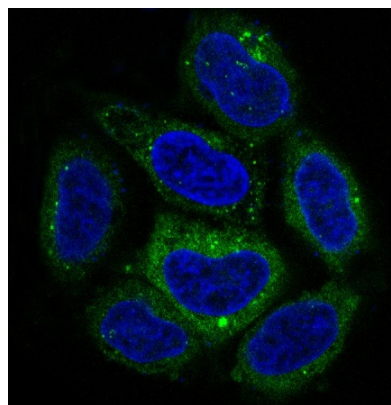
Dilutions

WB: 1/5000-1/10000

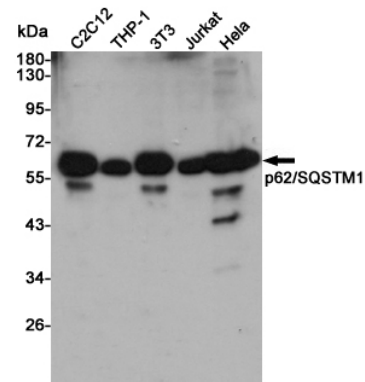
ICC/IF: 1/50-1/200

FC: 1/50

Validations



Immunofluorescent analysis of HeLa cells, using



p62/SQSTM1 Antibody.

Western blot analysis of p62/SQSTM1 expression in C2C12, THP-1, 3T3, Jurkat and HeLa cell lysates using p62/SQSTM1 antibody at 1/1000 dilution. Predicted band size: 47KDa. Observed band size: 62KDa.