

Anti-Superoxide Dismutase 1 Rabbit antibody



Catalog Number: 166974

Product name

Anti-Superoxide Dismutase 1 Rabbit antibody

Ig Type

Rabbit IgG

Specificity

Human, Rat

Applications

WB, IHC-P, ICC/IF, FC

Antibody description

Superoxide Dismutase 1 Rabbit polyclonal antibody

Dilutions

WB: 1/500-1/2000

IHC: 1/50-1/200

ICC/IF: 1/50-1/200

Preparation

Antigen: A synthesized peptide derived from human SOD1

FC: 1/50

Validations

Formulation

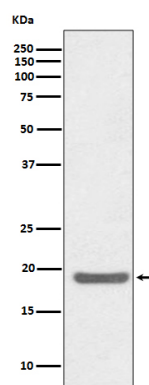
Rabbit IgG in phosphate buffered saline , pH 7.4, 150mM NaCl, 0.02% sodium azide and 50% glycerol.

Storage

Store at 4°C short term. Store at -20°C long term. Avoid freeze / thaw cycle.

Clonality

Polyclonal



Western blot analysis of CD80 expression in Jurkat cell lysate.