

Anti-Phospho-STAT1 (Tyr701) Rabbit antibody



Catalog Number: 166969

Product name

Anti-Phospho-STAT1 (Tyr701) Rabbit antibody

Specificity

Human, Mouse, Rat, Monkey

Antibody description

Phospho-STAT1 (Tyr701) Rabbit polyclonal antibody

Preparation

Antigen: The antiserum was produced against synthesized peptide derived from human STAT1 around the phosphorylation site of Tyr701. AA range:668-717

Formulation

Liquid in PBS containing 50% glycerol, 0.5% BSA and 0.02% sodium azide.

Storage

Store at 4°C short term. Store at -20°C long term. Avoid freeze / thaw cycle.

Clonality

Polyclonal

Ig Type

Rabbit IgG

Applications

ICC/IF, WB, IHC-P, IP, ELISA

Dilutions

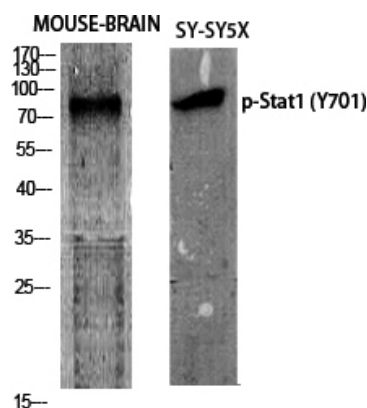
IF: 1/50-200

WB: 1/500 - 1/2000

IHC: 1/100 - 1/300

ELISA: 1/10000

Validations



Western Blot analysis of various cells using Phospho-Stat1 (Y701) Polyclonal Antibody