

# Anti-SLCO5A1 Rabbit antibody



Catalog Number: 166967

## Product name

Anti-SLCO5A1 Rabbit antibody

## Specificity

Human, Mouse

## Antibody description

SLCO5A1 Rabbit polyclonal antibody

## Preparation

Antigen: Recombinant protein of human SLCO5A1

## Formulation

Supplied in 50nM Tris-Glycine(pH 7.4), 0.15M NaCl, 40%Glycerol, 0.01% sodium azide and 0.05% BSA.

## Storage

Store at -20°C. Stable for 12 months from date of receipt.

## Clonality

Polyclonal

## Ig Type

Rabbit IgG

## Applications

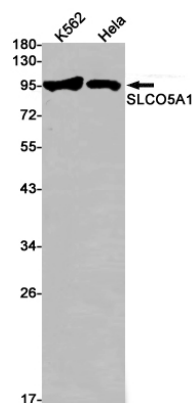
WB, IHC-P

## Dilutions

WB: 1/1000

IHC: 1/20

## Validations



Western blot detection of SLCO5A1 in K562, HeLa cell lysates using SLCO5A1 Rabbit pAb(1:1000 diluted). Predicted band size: 92kDa. Observed band size: 92kDa.