

# Anti-Caspase-9 Rabbit antibody



Catalog Number: 166965

## Product name

Anti-Caspase-9 Rabbit antibody

ICC/IF: 1/50-1/200

## Specificity

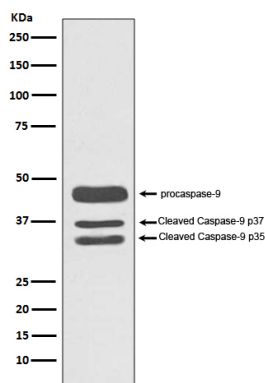
Human, Mouse

IP: 1/50

## Validations

## Antibody description

Caspase-9 Rabbit polyclonal antibody



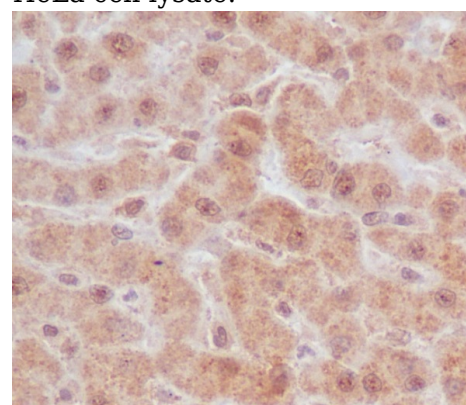
## Preparation

Antigen: A synthesized peptide derived from human Caspase-9

Western blot analysis of Caspase-9 expression in HeLa cell lysate.

## Formulation

Rabbit IgG in phosphate buffered saline , pH 7.4, 150mM NaCl, 0.02% sodium azide and 50% glycerol.



## Storage

Store at 4°C short term. Store at -20°C long term. Avoid freeze / thaw cycle.

Immunohistochemical analysis of paraffin-embedded human liver, using Caspase-9 Antibody.

## Clonality

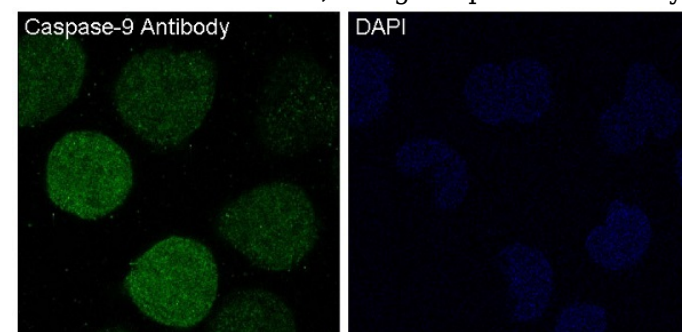
Polyclonal

## Ig Type

Rabbit IgG

## Applications

WB, IHC-P, ICC/IF, IP



## Dilutions

WB: 1/500-1/2000

IHC: 1/50-1/200

Immunofluorescent analysis of HeLa cells treated with staurosporine, using Caspase-9 Antibody.