

# Anti-M6PR Rabbit antibody



Catalog Number: 166962

## Product name

WB: 1/5000-1/20000

Anti-M6PR Rabbit antibody

IHC: 1/50-1/200

## Specificity

ICC/IF: 1/50-1/200

Human, Mouse, Rat

IP: 1/30

## Antibody description

FC: 1/100

M6PR Rabbit polyclonal antibody

## Preparation

Antigen: A synthesized peptide derived from human M6PR

## Formulation

Rabbit IgG in phosphate buffered saline , pH 7.4, 150mM NaCl, 0.02% sodium azide and 50% glycerol.

## Storage

Store at 4°C short term. Store at -20°C long term. Avoid freeze / thaw cycle.

## Clonality

Polyclonal

## Ig Type

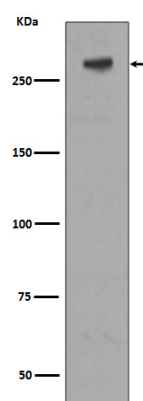
Rabbit IgG

## Applications

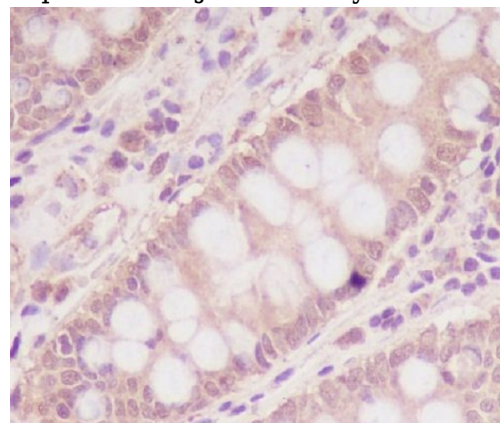
WB, IHC-P, ICC/IF, IP, FC

## Dilutions

## Validations



Western blot analysis of extracts of M6PR expression in Jurkat cell lysate.



Immunohistochemical analysis of paraffin-embedded human colon, using M6PR Antibody.