

# Anti-Integrin beta 1 Rabbit antibody



Catalog Number: 166953

## Product name

Rabbit IgG

Anti-Integrin beta 1 Rabbit antibody

## Applications

## Specificity

WB, ICC/IF, FC, IP

Mouse

## Dilutions

## Antibody description

WB: 1/1000

Integrin beta 1 Rabbit polyclonal antibody

ICC/IF: 1/50

## Preparation

FC: 1/20

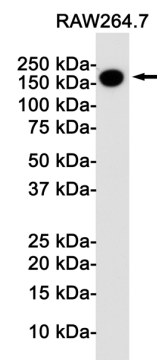
Antigen: A synthetic peptide of mouse CD11b

IP: 1/20

## Formulation

## Validations

Supplied in 50nM Tris-Glycine(pH 7.4), 0.15M NaCl, 40%Glycerol, 0.01% sodium azide and 0.05% BSA.



## Storage

Store at -20°C. Stable for 12 months from date of receipt.

## Clonality

Polyclonal

Western blot detection of CD11b in Raw264.7 cell lysates using CD11b Rabbit pAb(1:1000 diluted). Predicted band size: 128KDa. Observed band size: 170KDa.

## Ig Type