

Anti-Rad51 Rabbit antibody



Catalog Number: 166940

Product name

Anti-Rad51 Rabbit antibody

Specificity

Human, Mouse, Rat

Antibody description

Rad51 Rabbit polyclonal antibody

Preparation

Antigen: A synthetic peptide of human Rad51

Formulation

Supplied in 50nM Tris-Glycine(pH 7.4), 0.15M NaCl, 40%Glycerol, 0.01% sodium azide and 0.05% BSA.

Storage

Store at -20°C. Stable for 12 months from date of receipt.

Clonality

Polyclonal

Ig Type

Rabbit IgG

Applications

WB, ICC/IF, FC, IP

Dilutions

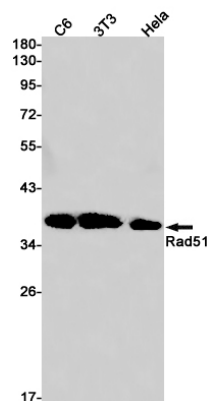
WB: 1/2000-1/10000

ICC/IF: 1/200

FC: 1/20-1/100

IP: 1/20

Validations



Western blot detection of Rad51 in C6,3T3,Hela cell lysates using Rad51 Rabbit pAb(1:1000 diluted).Predicted band size:37kDa.Observed band size:37kDa.