

Anti-PAK1 Rabbit antibody



Catalog Number: 166935

Product name

Anti-PAK1 Rabbit antibody

Specificity

Human, Mouse, Rat

Antibody description

PAK1 Rabbit polyclonal antibody

Preparation

Antigen: A synthetic peptide of human PAK1

Formulation

Supplied in 50nM Tris-Glycine(pH 7.4), 0.15M NaCl, 40%Glycerol, 0.01% sodium azide and 0.05% BSA.

Storage

Store at -20°C. Stable for 12 months from date of receipt.

Clonality

Polyclonal

Ig Type

Rabbit IgG

Applications

WB, ICC/IF, FC, IP

Dilutions

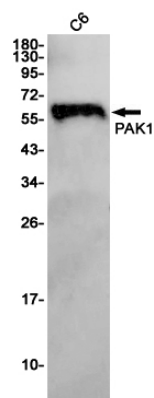
WB: 1/1000

ICC/IF: 1/20

FC: 1/20

IP: 1/20

Validations



Western blot detection of PAK1 in C6 cell lysates using PAK1 Rabbit pAb(1:1000 diluted).Predicted band size:61KDa.Observed band size:61KDa.