

Anti-Phospho-Rsk 2/MAPKAP Kinase 1b (Ser227) Rabbit antibody



Catalog Number: 166915

Product name	Polyclonal
Anti-Phospho-Rsk 2/MAPKAP Kinase 1b (Ser227) Rabbit antibody	Ig Type
	Rabbit IgG
Specificity	Applications
Human, Mouse, Rat	WB, IP
Antibody description	Dilutions
Phospho-Rsk 2/MAPKAP Kinase 1b (Ser227) Rabbit polyclonal antibody	WB: 1/1000
	IP: 1/20

Preparation

Antigen: A synthetic phosphopeptide corresponding to residues surrounding Ser227 of human Rsk 2/MAPKAP Kinase 1b

Formulation

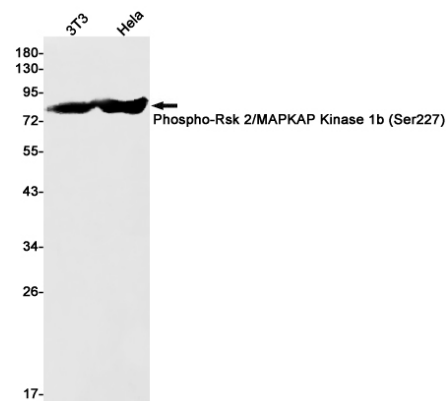
Supplied in 50nM Tris-Glycine(pH 7.4), 0.15M NaCl, 40%Glycerol, 0.01% sodium azide and 0.05% BSA.

Storage

Store at -20°C. Stable for 12 months from date of receipt.

Clonality

Validations



Western blot detection of Phospho-Rsk 2/MAPKAP Kinase 1b (Ser227) in 3T3, HeLa cell lysates using Phospho-Rsk 2/MAPKAP Kinase 1b (Ser227) Rabbit pAb(1:1000 diluted). Predicted band size: 84kDa. Observed band size: 84kDa.