

Anti-Phospho-Cannabinoid Receptor I (Ser316) Rabbit antibody



Catalog Number: 166909

Product name

Polyclonal

Anti-Phospho-Cannabinoid Receptor I (Ser316)
Rabbit antibody

Ig Type

Rabbit IgG

Specificity

Human

Applications

WB, FC

Antibody description

Phospho-Cannabinoid Receptor I (Ser316) Rabbit polyclonal antibody

Dilutions

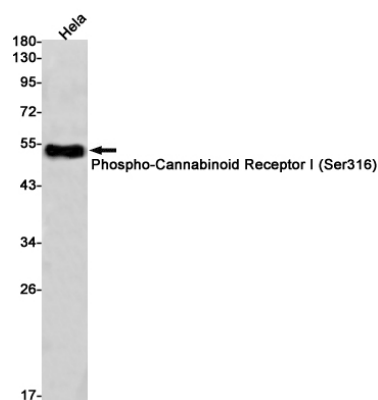
WB: 1/1000

FC: 1/50

Preparation

Antigen: A synthetic phosphopeptide corresponding to residues surrounding Ser316 of human Cannabinoid Receptor I

Validations



Formulation

Supplied in 50nM Tris-Glycine(pH 7.4), 0.15M NaCl, 40%Glycerol, 0.01% sodium azide and 0.05% BSA.

Western blot detection of Phospho-Cannabinoid Receptor I (Ser316) in HeLa cell lysates using Phospho-Cannabinoid Receptor I (Ser316) Rabbit pAb(1:1000 diluted). Predicted band size:53kDa. Observed band size:53kDa.

Storage

Store at -20°C. Stable for 12 months from date of receipt.

Clonality