

Anti-Heme Oxygenase 1 Rabbit antibody



Catalog Number: 166893

Product name

Anti-Heme Oxygenase 1 Rabbit antibody

Specificity

Human, Mouse

Antibody description

Heme Oxygenase 1 Rabbit polyclonal antibody

Preparation

Antigen: A synthesized peptide derived from human Heme Oxygenase 1

Formulation

Rabbit IgG in phosphate buffered saline , pH 7.4, 150mM NaCl, 0.02% sodium azide and 50% glycerol.

Storage

Store at 4°C short term. Store at -20°C long term. Avoid freeze / thaw cycle.

Clonality

Polyclonal

Ig Type

Rabbit IgG

Applications

WB, IHC-P, IP, FC

Dilutions

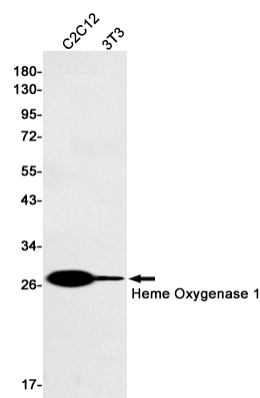
WB: 1/500-1/2000

IHC: 1/50-1/200

IP: 1/50

FC: 1/50

Validations



Western blot detection of Heme Oxygenase 1 in C2C12,3T3 cell lysates using Heme Oxygenase 1 Rabbit pAb(1:1000 diluted).Predicted band size:32kDa.Observed band size:32kDa.