

# Anti-Osteopontin Rabbit antibody



Catalog Number: 166892

## Product name

Anti-Osteopontin Rabbit antibody

## Specificity

Human, Mouse, Rat

## Antibody description

Osteopontin Rabbit polyclonal antibody

## Preparation

Antigen: The antiserum was produced against synthesized peptide derived from human Osteopontin. AA range:261-310

## Formulation

Liquid in PBS containing 50% glycerol, 0.5% BSA and 0.02% sodium azide.

## Storage

Store at 4°C short term. Store at -20°C long term. Avoid freeze / thaw cycle.

## Clonality

Polyclonal

## Ig Type

Rabbit IgG

## Applications

WB, IHC-P, ELISA

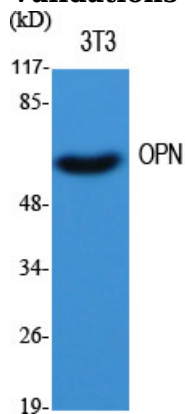
## Dilutions

WB: 1/500 - 1/2000

IHC: 1/100 - 1/300

ELISA: 1/20000

## Validations



Western Blot analysis of various cells using OPN Polyclonal Antibody