

# Anti-IGF2BP1/IMP1 Rabbit antibody



Catalog Number: 166847

## Product name

Anti-IGF2BP1/IMP1 Rabbit antibody

WB: 1/1000

IHC: 1/500

## Specificity

Human

IP: 1/20

## Antibody description

IGF2BP1/IMP1 Rabbit polyclonal antibody

## Preparation

Antigen: Recombinant protein of human IGF2BP1

## Formulation

Supplied in 50nM Tris-Glycine(pH 7.4), 0.15M NaCl, 40%Glycerol, 0.01% sodium azide and 0.05% BSA.

## Storage

Store at -20°C. Stable for 12 months from date of receipt.

## Clonality

Polyclonal

## Ig Type

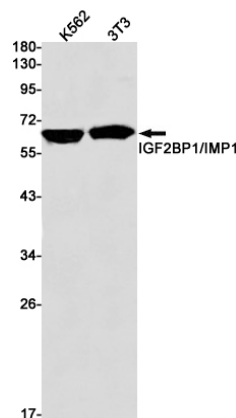
Rabbit IgG

## Applications

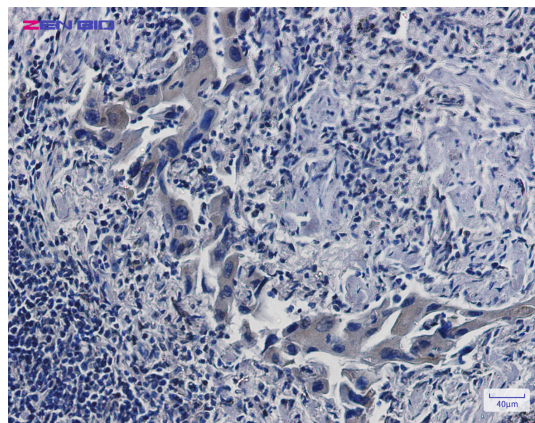
WB, IHC-P, IP

## Dilutions

## Validations



Western blot detection of IGF2BP1 in K562,3T3 cell lysates using IGF2BP1 Rabbit pAb(1:1000 diluted).Predicted band size:64kDa.Observed band size:64kDa.



Immunohistochemistry of IGF2BP1 in paraffin-embedded Human lung cancer tissue using IGF2BP1 Rabbit pAb at dilution 1/50