

Anti-MTHFR Rabbit antibody



Catalog Number: 166840

Product name

Anti-MTHFR Rabbit antibody

Specificity

Human, Mouse

Antibody description

MTHFR Rabbit polyclonal antibody

Preparation

Antigen: Recombinant protein of human MTHFR

Formulation

Supplied in 50nM Tris-Glycine(pH 7.4), 0.15M NaCl, 40%Glycerol, 0.01% sodium azide and 0.05% BSA.

Storage

Store at -20°C. Stable for 12 months from date of receipt.

Clonality

Polyclonal

Ig Type

Rabbit IgG

Applications

WB, ICC/IF, IP

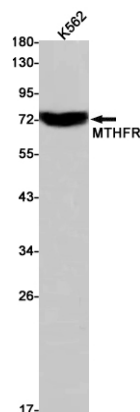
Dilutions

WB: 1/1000

ICC/IF: 1/20

IP: 1/20

Validations



Western blot detection of MTHFR in K562 cell lysates using MTHFR Rabbit pAb(1:1000 diluted). Predicted band size:75kDa.Observed band size:75kDa.