

Anti-CCR7 Rabbit antibody



Catalog Number: 166837

Product name

Anti-CCR7 Rabbit antibody

Specificity

Human, Mouse, Rat

Antibody description

CCR7 Rabbit polyclonal antibody

Preparation

Antigen: A synthetic peptide of human CCR7

Formulation

Supplied in 50nM Tris-Glycine(pH 7.4), 0.15M NaCl, 40%Glycerol, 0.01% sodium azide and 0.05% BSA.

Storage

Store at -20°C. Stable for 12 months from date of receipt.

Clonality

Polyclonal

Ig Type

Rabbit IgG

Applications

WB, ICC/IF, IP

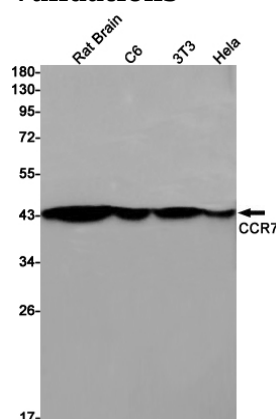
Dilutions

WB: 1/2000

ICC/IF: 1/20

IP: 1/20

Validations



Western blot detection of CCR7 in Rat Brain, C6, 3T3, HeLa cell lysates using CCR7 Rabbit pAb(1:1000 diluted). Predicted band size: 43kDa. Observed band size: 43kDa.