

Anti-CIRBP Rabbit antibody



Catalog Number: 166816

Product name

Anti-CIRBP Rabbit antibody

WB: 1/1000

IHC: 1/200

Specificity

Human

IP: 1/20

Antibody description

CIRBP Rabbit polyclonal antibody

Preparation

Antigen: Recombinant protein of human CIRBP

Formulation

Supplied in 50nM Tris-Glycine(pH 7.4), 0.15M NaCl, 40%Glycerol, 0.01% sodium azide and 0.05% BSA.

Storage

Store at -20°C. Stable for 12 months from date of receipt.

Clonality

Polyclonal

Ig Type

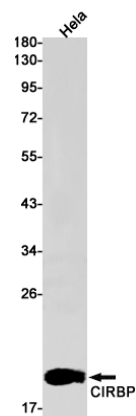
Rabbit IgG

Applications

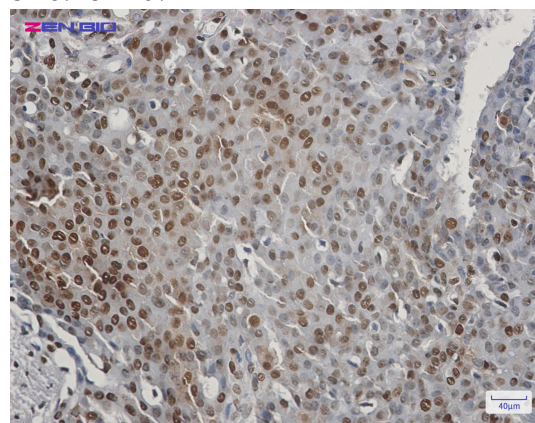
WB, IHC-P, IP

Dilutions

Validations



Western blot detection of CIRBP in HeLa cell lysates using CIRBP Rabbit pAb(1:1000 diluted). Predicted band size:19kDa. Observed band size:19kDa.



Immunohistochemistry of CIRBP in paraffin-embedded Human breast cancer tissue using CIRBP Rabbit pAb at dilution 1/50