

Anti-LYVE1 Rabbit antibody



Catalog Number: 166795

Product name

Anti-LYVE1 Rabbit antibody

Specificity

Mouse

Antibody description

LYVE1 Rabbit polyclonal antibody

Preparation

Antigen: Recombinant protein of mouse LYVE1

Formulation

Supplied in 50nM Tris-Glycine(pH 7.4), 0.15M NaCl, 40%Glycerol, 0.01% sodium azide and 0.05% BSA.

Storage

Store at -20°C. Stable for 12 months from date of receipt.

Clonality

Polyclonal

Ig Type

Rabbit IgG

Applications

WB, IHC-P, FC, IP

Dilutions

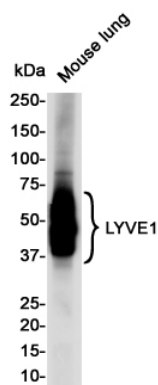
WB: 1/1000

IHC: 1/200

FC: 1/20

IP: 1/20

Validations



Western blot detection of LYVE1 in Mouse Lung lysates using LYVE1 Rabbit pAb(1:1000 diluted). Predicted band size: 35KDa. Observed band size: 35-70KDa.