

# Anti-IKB alpha Rabbit antibody



Catalog Number: 166782

## Product name

Anti-IKB alpha Rabbit antibody

IHC: 1/20

ICC/IF: 1/20

## Specificity

Human, Mouse, Rat

FC: 1/20

IP: 1/20

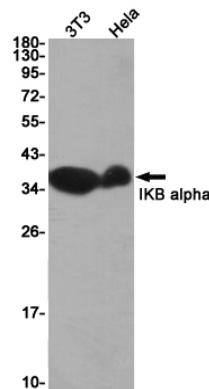
## Antibody description

IKB alpha Rabbit polyclonal antibody

## Validations

## Preparation

Antigen: A synthetic peptide of human IKB alpha



## Formulation

Supplied in 50nM Tris-Glycine(pH 7.4), 0.15M NaCl, 40%Glycerol, 0.01% sodium azide and 0.05% BSA.

Western blot detection of IKB alpha in 3T3,HeLa cell lysates using IKB alpha Rabbit pAb(1:1000 diluted).Predicted band size:36KDa.Observed

## Storage

Store at -20°C. Stable for 12 months from date of receipt.

## Clonality

Polyclonal

## Ig Type

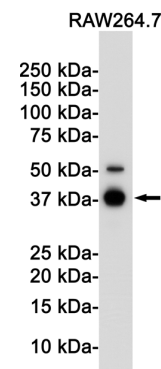
Rabbit IgG

## Applications

WB, IHC-P, ICC/IF, FC, IP

## Dilutions

WB: 1/1000-1/10000



band size:39KDa.

Western blot detection of IKB alpha in Raw264.7 cell lysates using IKB alpha Rabbit pAb(1:1000 diluted).Predicted band size:36KDa.Observed band size:39KDa.