

# Anti-Phospho-Cyclin E1 (Thr395) Rabbit antibody



Catalog Number: 166772

## Product name

WB

Anti-Phospho-Cyclin E1 (Thr395) Rabbit antibody

## Dilutions

## Specificity

WB:1/1000

Human

## Antibody description

Phospho-Cyclin E1 (Thr395) Rabbit polyclonal antibody

## Preparation

Antigen: Peptide sequence around phosphorylation site of threonine 395 (L-L-T(p)-P-P) derived from Human Cyclin E1

## Formulation

Supplied at 1.0mg/mL in phosphate buffered saline (without Mg<sup>2+</sup> and Ca<sup>2+</sup>), pH 7.4, 150mM NaCl, 0.02% sodium azide and 50% glycerol.

## Storage

Store at 4°C short term. Store at -20°C long term. Avoid freeze / thaw cycle.

## Clonality

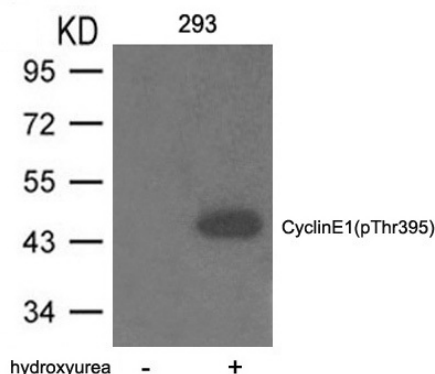
Polyclonal

## Ig Type

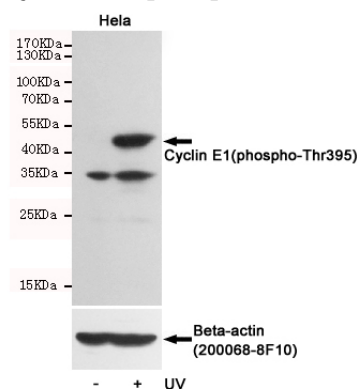
IgG

## Applications

## Validations



Western blot analysis of extracts from 293 cells untreated or treated with hydroxyurea using Cyclin E1 (phospho-Thr395) Antibody .



Western blot detection of Cyclin E1(phospho-Thr395) in HeLa cells untreated or treated with UV using Cyclin E1(phospho-Thr395) Rabbit pAb (dilution 1:500, upper) or u03b2-Actin Mouse mAb (200068-8F10, lower). Predicted band size:48kDa. Observed band size:48kDa.