

Anti-Prion protein PrP Rabbit antibody



Catalog Number: 166759

Product name

Anti-Prion protein PrP Rabbit antibody

WB: 1/1000-1/5000

IHC: 1/20

Specificity

Human, Mouse, Rat

ICC/IF: 1/20

FC: 1/50

Antibody description

Prion protein PrP Rabbit polyclonal antibody

Validations

Preparation

Antigen: A synthetic peptide of human Prion protein PrP

Formulation

Supplied in 50nM Tris-Glycine(pH 7.4), 0.15M NaCl, 40%Glycerol, 0.01% sodium azide and 0.05% BSA.

Storage

Store at -20°C. Stable for 12 months from date of receipt.

Clonality

Polyclonal

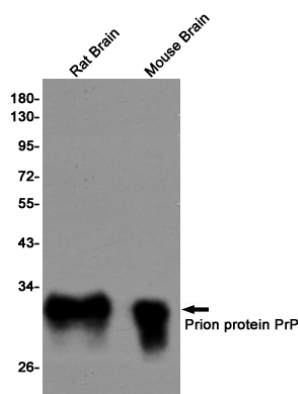
Ig Type

Rabbit IgG

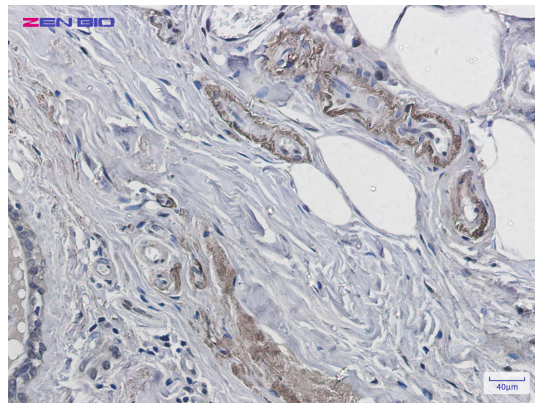
Applications

WB, IHC-P, ICC/IF, FC

Dilutions



Western blot detection of Prion protein PrP in Rat Brain and Mouse Brain lysates using Prion protein PrP rabbit pAb (1:1000 diluted). Predicted band size: 28kDa. Observed band size: 28kDa.



Immunohistochemistry of Prion protein PrP in paraffin-embedded Human breast cancer tissue using Prion protein PrP Rabbit pAb at dilution 1/20