

Anti-STAT1 Rabbit antibody



Catalog Number: 166738

Product name

Anti-STAT1 Rabbit antibody

Specificity

Human, Mouse

Antibody description

STAT1 Rabbit polyclonal antibody

Preparation

Antigen: A synthesized peptide derived from human STAT1

Formulation

Rabbit IgG in phosphate buffered saline , pH 7.4, 150mM NaCl, 0.02% sodium azide and 50% glycerol.

Storage

Store at 4°C short term. Store at -20°C long term. Avoid freeze / thaw cycle.

Clonality

Polyclonal

Ig Type

Rabbit IgG

Applications

WB, IP, FC

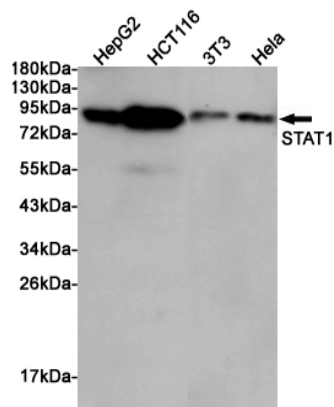
Dilutions

WB: 1/1000-1/2000

IP: 1/50

FC: 1/50

Validations



Western blot analysis of extracts from HepG2, HCT116, 3T3 and HeLa cells using Stat1 Rabbit pAb at 1:1000 dilution. Predicted band size: 84kDa. Observed band size: 84kDa.