

Anti-TGF beta 1 Rabbit antibody



Catalog Number: 166720

Product name

Anti-TGF beta 1 Rabbit antibody

Specificity

Human, Mouse, Rat

Antibody description

TGF beta 1 Rabbit polyclonal antibody

Preparation

Antigen: The antiserum was produced against synthesized peptide derived from human TGF beta1. AA range:336-385

Formulation

Liquid in PBS containing 50% glycerol, 0.5% BSA and 0.02% sodium azide.

Storage

Store at 4°C short term. Store at -20°C long term. Avoid freeze / thaw cycle.

Clonality

Polyclonal

Ig Type

Unknown

Applications

WB, IHC-P, ICC/IF, ELISA

Dilutions

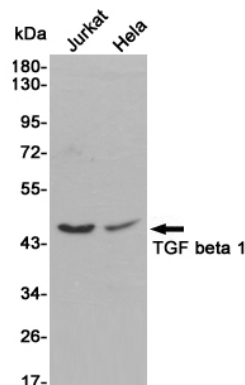
WB: 1/500 - 1/2000

IHC: 1/100 - 1/300

IF: 1/200 - 1/1000

ELISA: 1/20000

Validations



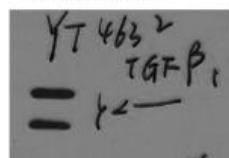
Western blot detection of TGF beta 1 in Jurkat and HeLa cell lysates using TGF beta 1 rabbit pAb (1:1000 diluted). Predicted band size: 44kDa. Observed band size: 45~60kDa.

mouse-brain



TGF B1 precursor (40KD)

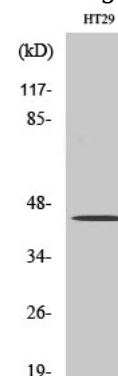
mouse-brain



TGF B1 precursor (40KD)

LAP form 35KD

Western Blot analysis of mouse-brain using



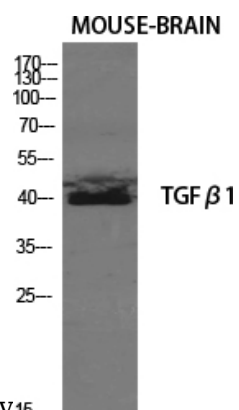
TGFu03b21 Polyclonal Antibody.

Western Blot analysis of MCF7 cells using

Anti-TGF beta 1 Rabbit antibody



Catalog Number: 166720



Western Blot analysis of mouse-brain cells using
TGFu03b21 Polyclonal Antibody

TGFu03b21 Polyclonal Antibody