

Anti-c-Myc Rabbit antibody

Catalog Number: 166719

Product name

Anti-c-Myc Rabbit antibody

Specificity

Human, Mouse, Rat

Antibody description

c-Myc Rabbit polyclonal antibody

Preparation

Antigen: The antiserum was produced against synthesized peptide derived from human MYC. AA range:386-435

Formulation

Liquid in PBS containing 50% glycerol, 0.5% BSA and 0.02% sodium azide.

Storage

Store at 4°C short term. Store at -20°C long term. Avoid freeze / thaw cycle.

Clonality

Polyclonal

Ig Type

Rabbit IgG

Applications

WB, IHC-P, ICC/IF, ELISA

Dilutions

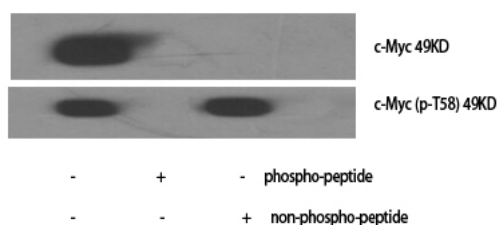
WB: 1/500 - 1/2000

IHC: 1/100 - 1/300

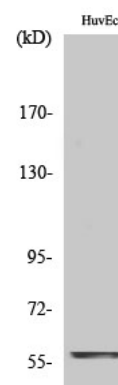
IF: 1/200 - 1/1000

ELISA: 1/40000

Validations



Western Blot analysis of various cells using c-Myc



Polyclonal Antibody

Western Blot analysis of HuvEc cells using c-Myc Polyclonal Antibody