

Anti-Phospho-Histone H3 (Ser139) Rabbit antibody



Catalog Number: 166716

Product name

WB, ICC/IF

Anti-Phospho-Histone H3 (Ser139) Rabbit antibody

Dilutions

WB:1/500-1/1000 ICC:1/200

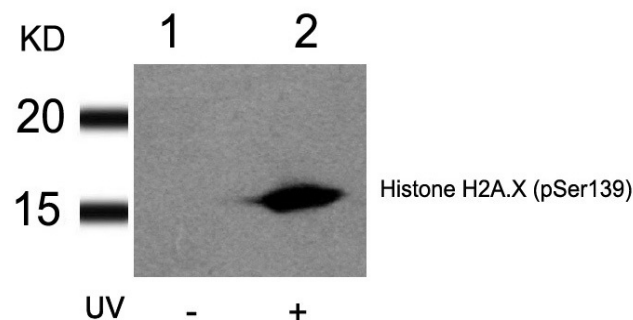
Specificity

Human

Validations

Antibody description

Phospho-Histone H3 (Ser139) Rabbit polyclonal antibody



Preparation

Antigen: Peptide sequence around phosphorylation site of serine 139 (Q-A-S(p)-Q-E) derived from Human Histone H2A.X.

Western blot analysis of extracts from HT29 cells untreated (lane 1) or treated with UV (lane 2) using Histone H2A.X (Phospho-Ser139) Antibody .

Formulation

Supplied at 1.0mg/mL in phosphate buffered saline (without Mg²⁺ and Ca²⁺), pH 7.4, 150mM NaCl, 0.02% sodium azide and 50% glycerol.

Storage

Store at 4°C short term. Store at -20°C long term. Avoid freeze / thaw cycle.

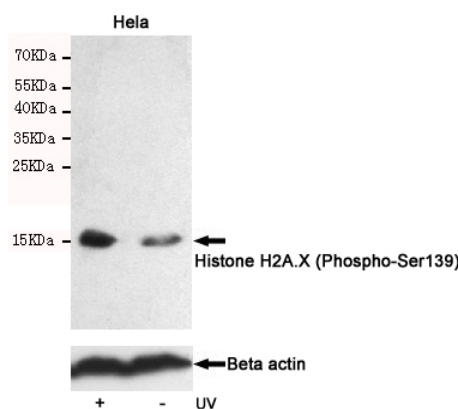
Clonality

Polyclonal

Ig Type

Rabbit IgG

Applications



Western blot analysis of extracts from HeLa cells, untreated or treated with UV, using Histone H2A.X (Phospho-Ser139) Rabbit pAb (166716,1:500 diluted,upper) or Beta actin Mouse mAb (200068-8F10,lower).