

# Anti-Phospho-Src (Tyr530) Rabbit antibody



Catalog Number: 166687

## Product name

Anti-Phospho-Src (Tyr530) Rabbit antibody

## Specificity

Human, Mouse, Rat

## Antibody description

Phospho-Src (Tyr530) Rabbit polyclonal antibody

## Preparation

Antigen: Peptide sequence around phosphorylation site of tyrosine 529 (P-Q-Y(p)-Q-P) derived from Human Src.

## Formulation

Supplied at 1.0mg/mL in phosphate buffered saline (without Mg<sup>2+</sup> and Ca<sup>2+</sup>), pH 7.4, 150mM NaCl, 0.02% sodium azide and 50% glycerol.

## Storage

Store at 4°C short term. Store at -20°C long term. Avoid freeze / thaw cycle.

## Clonality

Polyclonal

## Ig Type

Rabbit IgG

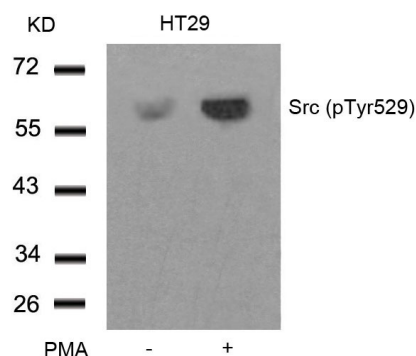
## Applications

WB, IHC-P, ICC/IF

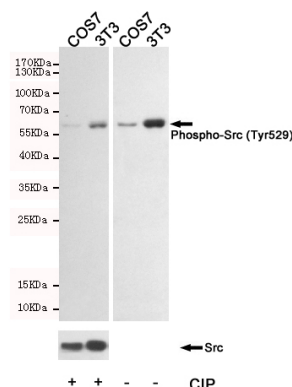
## Dilutions

WB:1/500-1/1000 ICC:1/100-1/200 IHC:1/50-1/100

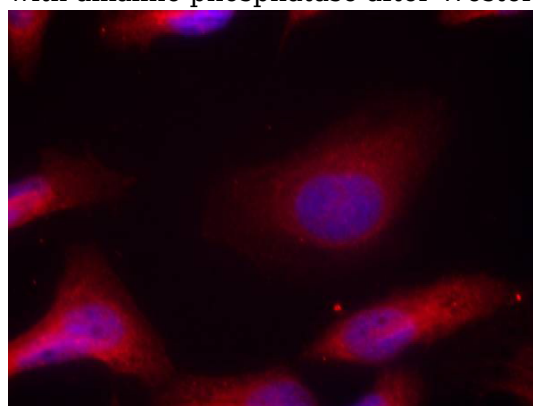
## Validations



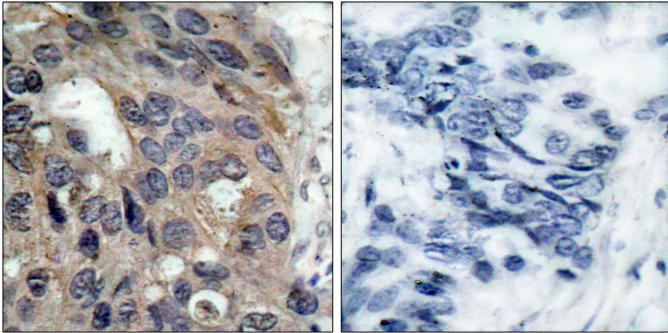
Western blot analysis of extracts from HT29 cells untreated or treated with PMA using Src (Phospho-Tyr529) Antibody .



Western blot analysis of extracts from COS7 and 3T3 cells, using SRC(Phospho-Tyr529) Rabbit mAb. The phospho-specificity of the antibody was further characterized by treating the membrane with alkaline phosphatase after Western transfer.



Immunofluorescence staining of methanol-fixed HeLa cells using Src (Phospho-Tyr529) Antibody .



Immunohistochemical analysis of paraffin-embedded human breast carcinoma tissue using Src (Phospho-Tyr529) Antibody (left) or the same antibody preincubated with blocking peptide (right).