

Anti-GFAP Rabbit antibody



Catalog Number: 166681

Product name

Anti-GFAP Rabbit antibody

Specificity

Human, Rat

Antibody description

GFAP Rabbit polyclonal antibody

Preparation

Antigen: A synthesized peptide derived from human GFAP

Formulation

Rabbit IgG in phosphate buffered saline , pH 7.4, 150mM NaCl, 0.02% sodium azide and 50% glycerol.

Storage

Store at 4°C short term. Store at -20°C long term. Avoid freeze / thaw cycle.

Clonality

Polyclonal

Ig Type

Rabbit IgG

Applications

WB, IHC-P, ICC/IF

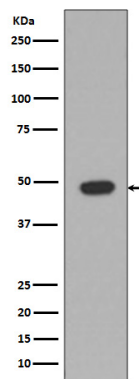
Dilutions

WB: 1/500-1/2000

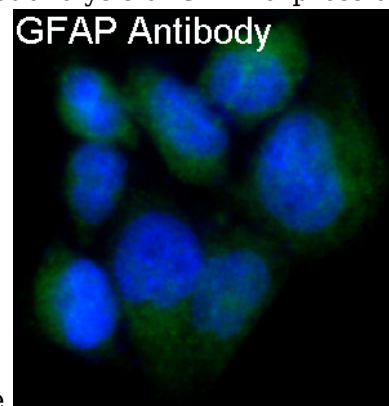
IHC: 1/50-1/200

ICC/IF: 1/50-1/200

Validations

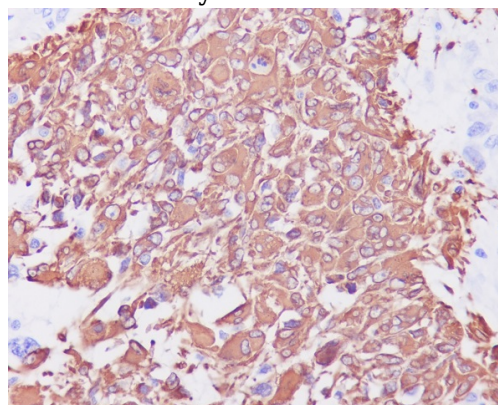


Western blot analysis of GFAP expression in Rat



brain lysate.

Immunofluorescent analysis of SNB19 cells, using GFAP Antibody.

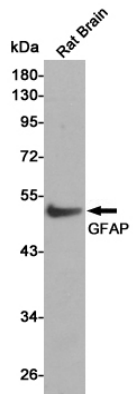


Immunohistochemical analysis of paraffin-embedded human glioma, using GFAP Antibody .

Anti-GFAP Rabbit antibody



Catalog Number: 166681



Western blot analysis of GFAP expression in Rat Brain cell lysates using GFAP antibody at 1/1000 dilution. Predicted band size: 50KDa. Observed band size: 50KDa.