

Anti-Phospho-Hsp90 beta (Ser254) Rabbit antibody



Catalog Number: 166676

General Information

Product name:

Anti-Phospho-Hsp90 beta (Ser254) Rabbit antibody

Immunogen:

Applications:

WB

Specificity:

Human, Mouse, Rat

Antibody description:

Phospho-Hsp90 beta (Ser254) Rabbit polyclonal antibody

Properties

Preparation:

Antigen: Peptide sequence around phosphorylation site of serine 254 (V-G-S(p)-D-E) derived from Human HSP90B.

Formulation:

Supplied at 1.0mg/mL in phosphate buffered saline (without Mg²⁺ and Ca²⁺), pH 7.4, 150mM NaCl, 0.02% sodium azide and 50% glycerol.

Storage:

Store at 4°C short term. Store at -20°C long term. Avoid freeze / thaw cycle.

Clonality:

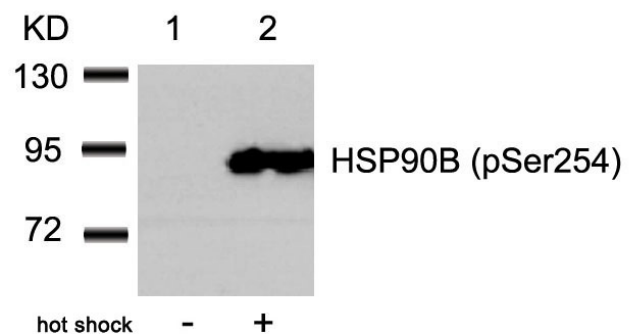
Polyclonal antibody

Ig Type: IgG

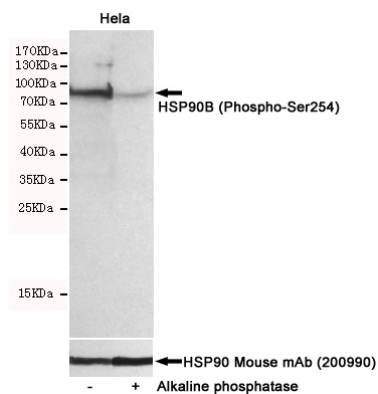
Applications

WB: 1/500-1/1000

Validations



Western blot analysis of extracts from HeLa cells untreated (lane 1) or treated with hot shock (lane 2) using HSP90B (Phospho-Ser254) Antibody .



Western blot detection of HSP90B (Phospho-Ser254) in HeLa cells untreated or treated with Alkaline phosphatase using HSP90B (Phospho-Ser254) Rabbit pAb (dilution 1:500, upper) HSP90 Mouse mAb (200990, lower). Predicted band size: 90kDa. Observed band size: 90kDa.