

# Anti-eIF4EBP1 Rabbit antibody

Catalog Number: 166664

## Product name

Anti-eIF4EBP1 Rabbit antibody

## Specificity

Human, Mouse, Rat

## Antibody description

eIF4EBP1 Rabbit polyclonal antibody

## Preparation

Antigen: Synthetic peptide.

## Formulation

Purified Rabbit polyclonal antibody in PBS(pH 7.4) containing with 0.03% Proclin300 and 50% glycerol.

## Storage

Store at 4°C short term. Store at -20°C long term. Avoid freeze / thaw cycle.

## Clonality

Polyclonal

## Ig Type

Rabbit IgG

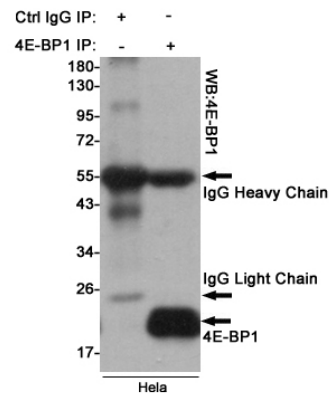
## Applications

WB, IP

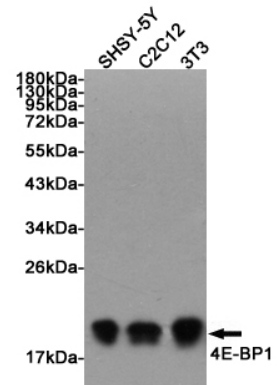
## Dilutions

WB: 1/1000

## Validations

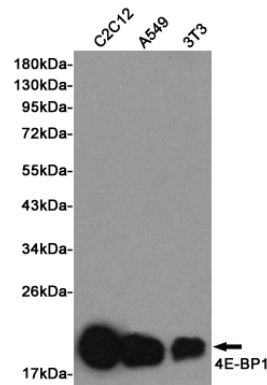


Immunoprecipitation analysis of HeLa cell lysates



using 4E-BP1 Rabbit pAb.

Western blot detection of 4E-BP1 in SHSY-5Y, C2C12 and 3T3 cell lysates using 4E-BP1 Rabbit pAb (1:1000 diluted). Predicted band size: 13KDa. Observed band size:15~20KDa.

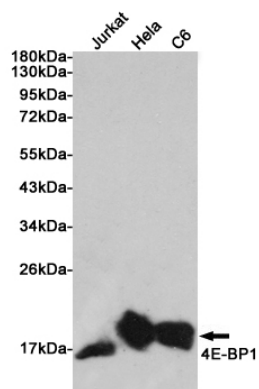


Western blot detection of 4E-BP1 in C2C12, A549 and 3T3 cell lysates using 4E-BP1 Rabbit pAb (1:1000 diluted). Predicted band size: 13KDa.

# Anti-eIF4EBP1 Rabbit antibody



Catalog Number: 166664



Western blot detection of 4E-BP1 in Jurkat, HeLa and C6 cell lysates using 4E-BP1 Rabbit pAb (1:1000 diluted). Predicted band size: 13KDa. Observed band size:15~20KDa.

Observed band size:15~20KDa.