

# SYN1 Polyclonal Antibody



Catalog Number: 166628

## General Information

### Product name:

SYN1 Polyclonal Antibody

### Immunogen:

### Applications:

WB

### Specificity:

Human

### Antibody description:

Polyclonal antibody to SYN1

## Properties

### Preparation:

Antigen: A synthetic peptide of human SYN1

### Formulation:

PBS with 0.02% sodium azide, pH7.3.

### Storage:

Store at 4°C. Avoid freeze / thaw cycles.

### Clonality:

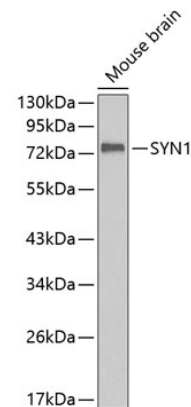
Polyclonal

### Ig Type:Rabbit IgG

## Applications

WB 1:500 - 1:1000

## Validations



Western blot - SYN1 Polyclonal Antibody

Western blot analysis of extracts of mouse brain, using SYN1 antibody .Secondary antibody: HRP Goat Anti-Rabbit IgG (H+L) at 1:10000 dilution.Lysates/proteins: 25ug per lane.Blocking buffer: 3% nonfat dry milk in TBST.