

# DRD2 Polyclonal Antibody



Catalog Number: 166564

## General Information

### Product name:

DRD2 Polyclonal Antibody

### Immunogen:

### Applications:

WB

### Specificity:

Human, Mouse, Rat

### Antibody description:

Polyclonal antibody to DRD2

## Properties

### Preparation:

Antigen: Recombinant fusion protein containing a sequence corresponding to amino acids 214-373 of human DRD2 (NP\_000786.1).

### Formulation:

PBS with 0.02% sodium azide, 50% glycerol, pH7.3.

### Storage:

Store at -20°C. Avoid freeze / thaw cycles.

### Clonality:

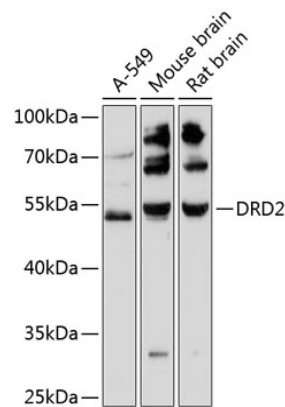
Polyclonal

Ig Type: Rabbit IgG

## Applications

WB 1:500 - 1:1000

## Validations



Western blot - DRD2 Polyclonal Antibody

Western blot analysis of extracts of various cell lines, using DRD2 antibody at 1:3000 dilution. Secondary antibody: HRP Goat Anti-Rabbit IgG (H+L) at 1:10000 dilution. Lysates/proteins: 25ug per lane. Blocking buffer: 3% nonfat dry milk in TBST. Detection: ECL Basic Kit. Exposure time: 90s.