

Phospho-LMNA-S22 pAb

Catalog Number: 166514

General Information

Product name:

Phospho-LMNA-S22 pAb

Immunogen:

Applications:

WB, IP

Specificity:

Human, Rat

Antibody description:

Polyclonal antibody to Phospho-LMNA-S22

Properties

Preparation:

Antigen: A synthetic phosphorylated peptide around S22 of human LMNA (NP_005563.1).

Formulation:

PBS with 0.02% sodium azide, 50% glycerol, pH7.3.

Storage:

Store at -20°C. Avoid freeze / thaw cycles.

Clonality:

Polyclonal

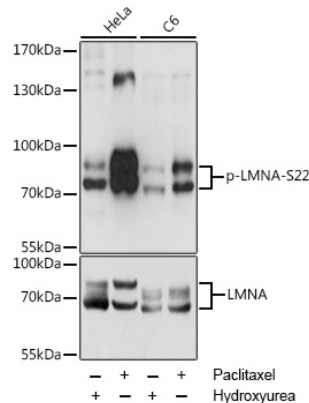
Ig Type:Rabbit IgG

Applications

WB 1:500 - 1:2000

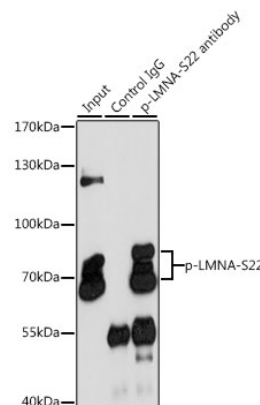
IP 1:50 - 1:100

Validations



Western blot - Phospho-LMNA-S22 pAb

Western blot analysis of extracts of various cell lines, using Phospho-LMNA-S22 antibody at 1:2000 dilution or LMNA antibody. HeLa cells were treated by Hydroxyurea (4 mM) at 37u2103 for 20 hours or treated by Paclitaxel (100 nM/ml) at 37u2103 for 20 hours. C6 cells were treated by Hydroxyurea (4 mM) at 37u2103 for 20 hours or treated by Paclitaxel (100 nM) at 37u2103 for 20 hours. Secondary antibody: HRP Goat Anti-Rabbit IgG (H+L) at 1:10000 dilution. Lysates/proteins: 25ug per lane. Blocking buffer: 3% BSA. Detection: ECL Enhanced Kit. Exposure time: 1s.



Immunoprecipitation - Phospho-LMNA-S22 pAb

Immunoprecipitation analysis of 200ug extracts of HeLa cells, using 3 ug Phospho-LMNA-S22 pAb. Western blot was performed from the immunoprecipitate using Phospho-LMNA-S22 pAb at a dilution of 1:1000. HeLa cells were treated by Paclitaxel (100 nM/ml) at 37u2103 for 20 hours.